



评级概况：

	"	"	"	"
			BBB <sub>i</sub> -	BBB <sub>i</sub>
2022				
			2009	
20,				GDP

2022 11.7% 25% GDP 2022

176

2025 " " 2022

7.4%

2023

	2.2	17.5%	2005		
2017	45.6%	2022	6.5%	2010	
ROA		ROE	1.4%	13.1%	
<b>4.</b>	<b>2023</b>				
2008					
"					
2023	5			2019	
		6			
		158	300		
			2022		62.7
BBB <sub>i</sub> +	BBB <sub>i</sub>		"	"	"
<b>1.</b>					
	<b>2023</b>	<b>2024</b>			
					60%
2022					
14.9%		4.2%			
	GDP	22.6	178.1%	BBB <sub>i</sub> +	BBB <sub>i</sub>
					2023
2024		160%			
		67.7%	21.9%		90%
		86.5%	13.5%		
2022			28.2%		3.3

2.

2022

		2022			
	214.2		GDP	209.8	
				9.8%	2011
2022			5,840.7	GDP	266.4%
2021	25.9			BBB <sub>i</sub> +	BBB <sub>i</sub>
				50.2%	23.9%
	74%			67.7%	
32.3%		2022			20.2%

3.

		2022				90%
					2022	CPI
9.3%	BBB <sub>i</sub> +		1994			
				TAP		IGB
						2023 2024
	CPI		4%	3%		

**评级敏感性因素**

1.

2.

3.

1.

2.

1

## 2018 2022

		2022	2021	2020	2019	2018
GDP		2,080.3	1,816.8	1,654.1	1,833.5	1,795.6
GDP		2,192.4	2,150.2	1,887.8	2,052.8	2,121.5
GDP	%	5.9	8.4	-9.0	1.9	1.7
CPI	%	9.3	0.6	-1.3	0.5	0.8
	%	12.4	14.8	16.3	17.3	19.3
GDP		20,960.1	20,135.3	17,612.0	19,141.0	19,750.7
GDP	%	68.7	67.5	69.1	68.1	68.1
GDP	%	22.3	23.0	24.5	21.7	21.6
GDP	%	91.0	90.5	93.6	89.8	89.7
GDP	%	16.7	16.7	14.8	12.6	13.4
GDP	%	-7.6	-7.2	-8.4	-2.4	-3.1
GDP	%	3.9	3.9	4.2	3.8	3.6
GDP	%	16.8	15.3	15.0	13.4	13.6
GDP	%	67.1	68.2	68.5	69.5	69.4
GDP	%	12.2	12.7	12.3	13.4	13.3
	%	17.5	15.2	16.7	17.0	16.0
	%	6.5	9.2	27.0	36.4	42.0
ROA	%	1.4	-1.4	-0.4	0.2	-0.2
ROE	%	13.1	-19.1	-5.9	0.7	-0.4
/GDP	%	106.0	88.9	69.3	80.1	79.0
		1,044.1	909.1	819.9	880.7	885.3
/GDP	%	50.2	50.0	49.6	48.0	49.3
		1,092.1	1,048.3	993.3	881.3	870.8
/GDP	%	52.5	57.7	60.1	48.1	48.5
		-48.0	-139.2	-173.5	-0.6	14.5
/GDP	%	-2.3	-7.7	-10.5	0.0	0.8
		3,705.3	3,647.0	3,513.7	3,401.8	3,423.7
/GDP	%	178.1	200.7	212.4	185.5	190.7
/	%	28.2	24.9	23.3	25.9	25.9
		1,057.6	875.2	590.2	811.8	818.7
		1,267.3	1,035.3	717.6	831.9	858.0
		-209.8	-160.1	-127.4	-20.1	-39.4
		1,180.8	1,016.3	708.7	924.3	916.9
		-214.2	-138.6	-124.1	-31.1	-62.5
/GDP	%	-9.8	-6.4	-6.6	-1.5	-2.9

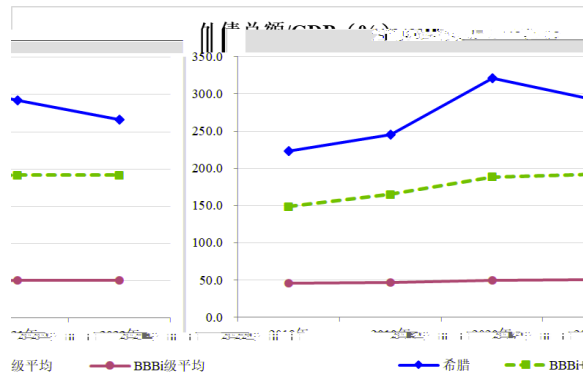
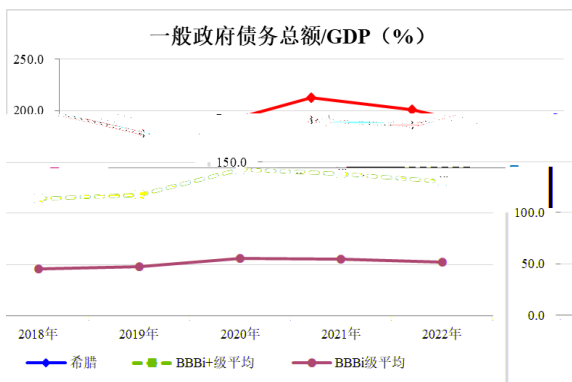
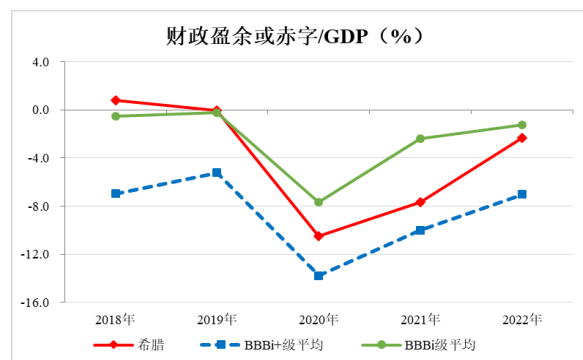
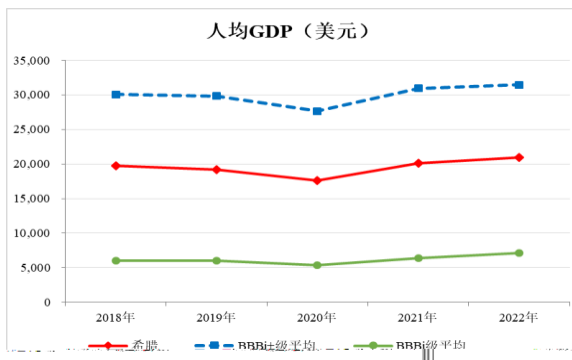
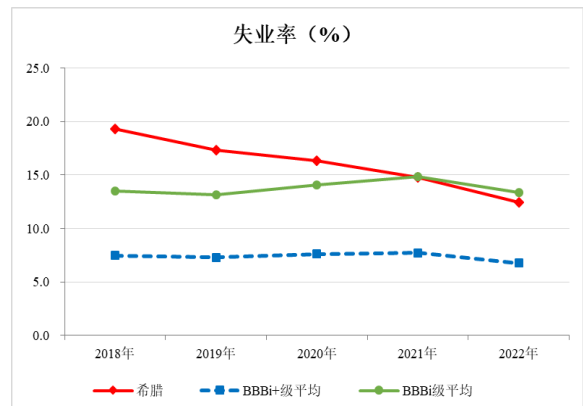
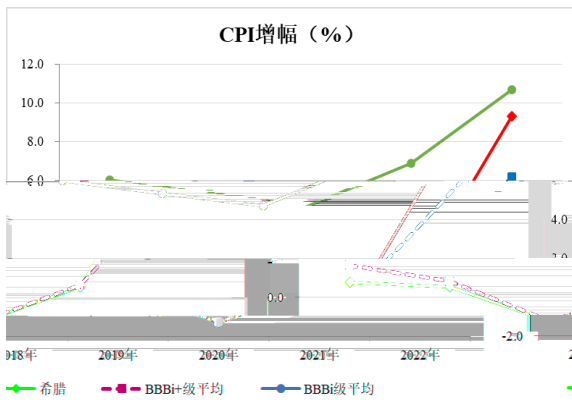
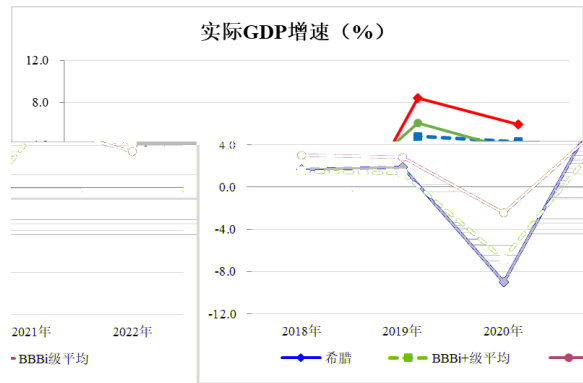
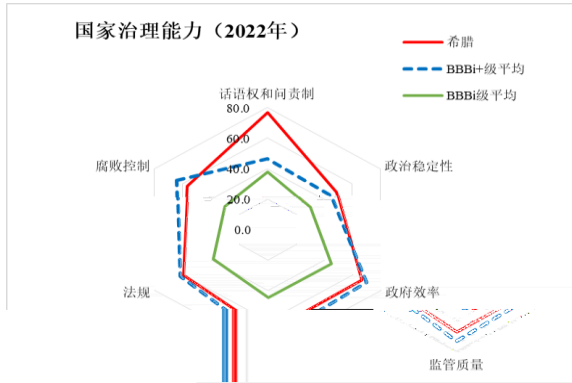
		-3,177.0	-3,556.7	-3,528.0	-3,173.7	-3,056.0
/GDP	%	-144.9	-165.4	-186.9	-154.6	-144.1
		5,840.7	6,284.8	6,068.2	5,038.4	4,733.3
/GDP	%	266.4	292.3	321.5	245.4	223.1
		2,933.5	3,233.0	3,514.4	3,358.5	3,415.8
/	%	50.2	51.4	57.9	66.7	72.2
/	%	20.2	16.2	11.7	18.3	19.4
/	%	40.3	31.4	20.2	27.5	26.8

IMF

## 2 2023 2024

	2023	2023	2023	2024
GDP	%	1.8	2.0	2.0
			EMC /P	





IMF



## 权利与免责声明

1.

2.

3.

4.

5.