

新西兰跟踪评级报告

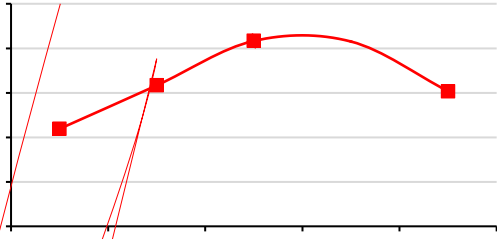
AA_i+
AAA_i

AA_i+
AAA_i

:

4 2013~2017

2 2013~2017 GDP



: IMF

3 2008~2017 CPI

: IMF

i *i*
i *i*
i *i*

i

i

5 2013~2017

GDP

: IMF

2 2013~2017

	2013	2014	2015	2016	2017
	774.90	815.33	861.11	912.01	967.12
/GDP	34.01	33.90	34.30	34.29	34.12
	792.10	817.43	846.82	877.23	920.85
/GDP	34.76	33.99	33.74	32.98	32.49
	-17.2	-2.1	14.29	34.78	46.27
/GDP	-0.76	-0.09	0.57	1.31	1.63

: IMF

4 2013~2017

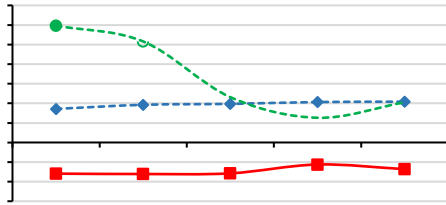
	2013	2014	2015	2016	2017
	513.25	541.93	475.37	475.15	525.25
	532.18	563.80	489.44	485.35	542.48
	18.93	21.87	14.07	10.20	17.23
	599.88	637.36	557.83	559.91	--
	-59.49	-64.28	-55.31	-41.71	-54.89
/GDP %	-3.18	-3.22	-3.15	-2.25	-2.72
	-1203.38	-1229.00	-105.357	-1098.60	-1101.50
/GDP %	-64.36	-61.50	-59.94	-59.26	-54.67

: IMF

i i

9 2013~2017

/GDP



: IMF

i

5 2013~2017

	2013	2014	2015	2016	2017
	1911.22	1912.68	1714.28	1831.05	1920.27
/GDP %	102.21	95.71	97.52	98.78	95.31
	405.15	426.07	387.68	379.93	375.85
/ %	21.20	22.28	22.61	20.75	19.57

: IMF

6 2013~2017

	2013	2014	2015	2016	2017
	163.18	158.61	147.00	178.08	206.84
CAR/ %	31.39	33.32	32.54	30.58	--
CAR/ %	148.09	149.59	143.87	147.38	--
/ %	8.54	8.29	8.57	9.73	10.77
/ %	40.28	37.23	37.92	46.87	55.03

: IMF

10 2017~2018

: WIND

GDP		2278.77	2405.24	2510.22	2659.82	2834.43
GDP		1869.80	1998.37	1757.84	1853.80	2014.85
GDP	%	2.19	3.166	4.166	4.152	3.035
CPI	%	1.13	1.22	0.31	0.64	1.85
	%	5.75	5.35	5.375	5.10	4.70
GDP		41737.58	43694.52	37300.53	38277.93	41629.33
GDP	%	77.1	76.2	76.2	75.6	75.4
GDP	%	21.1	22.2	22.9	23.6	23.4
GDP	%	1.05	1.10	0.75	0.64	0.89
	%	77.1	76.2	76.2	75.6	75.4
		774.90	815.33	861.11	912.01	967.12
/GDP	%	34.01	33.90	34.30	34.29	34.12
		792.10	817.43	846.82	877.23	920.85
/GDP	%	34.76	33.99	33.74	32.98	32.49
		-17.2	-2.1	14.29	34.78	46.27
/GDP	%	-0.76	-0.09	0.57	1.31	1.63
		682.40	698.77	713.52	749.07	749.09
/GDP	%	29.946	29.052	28.425	28.162	26.428
		180.85	185.65	159.78	159.12	131.78
/GDP	%	7.94	7.72	6.37	5.98	4.65
/	%	113.56	116.68	120.68	121.75	129.11
		513.25	541.93	475.37	475.15	525.25
		532.18	563.80	489.44	485.35	542.48
		18.93	21.87	14.07	10.2	17.23
/GDP	%	55.91	55.33	54.89	51.81	52.99
		599.88	637.36	557.83	559.91	--
		-59.49	-64.28	-55.31	-41.71	-54.89
/GDP	%	-3.18	-3.22	-3.15	-2.25	-2.72
		-1203.38	-1229.00	-105.357	-1098.60	-1101.50
/GDP	%	-64.36	-61.50	-59.94	-59.26	-54.67
		1911.22	1912.68	1714.28	1831.05	1920.27
		405.15	426.07	387.68	379.93	375.85
/GDP	%	102.21	95.71	97.52	98.78	95.31
	%	21.20	22.28	22.61	20.75	19.57
		163.18	158.61	147.00	178.08	206.84
/	%	31.39	33.32	32.54	30.58	--
/	%	8.54	8.29	8.57	9.73	10.77

