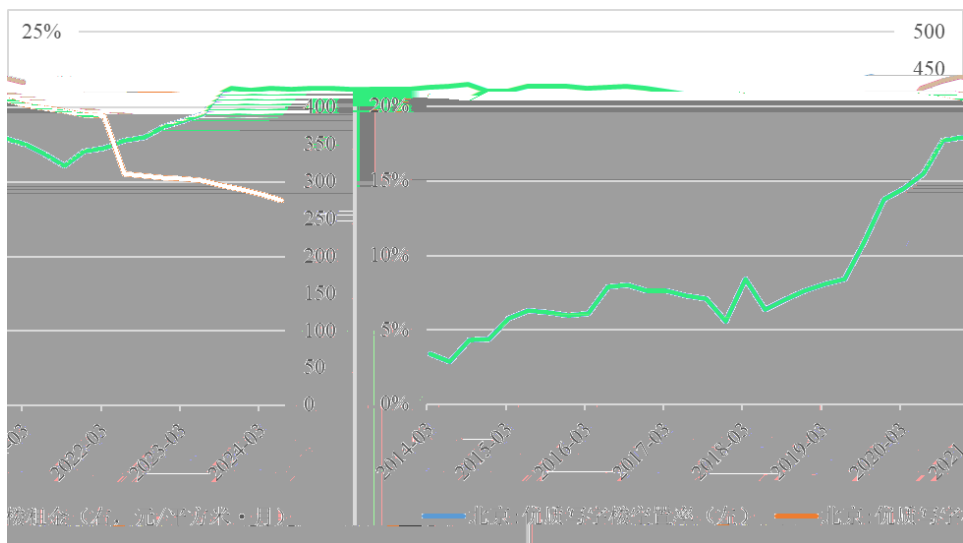
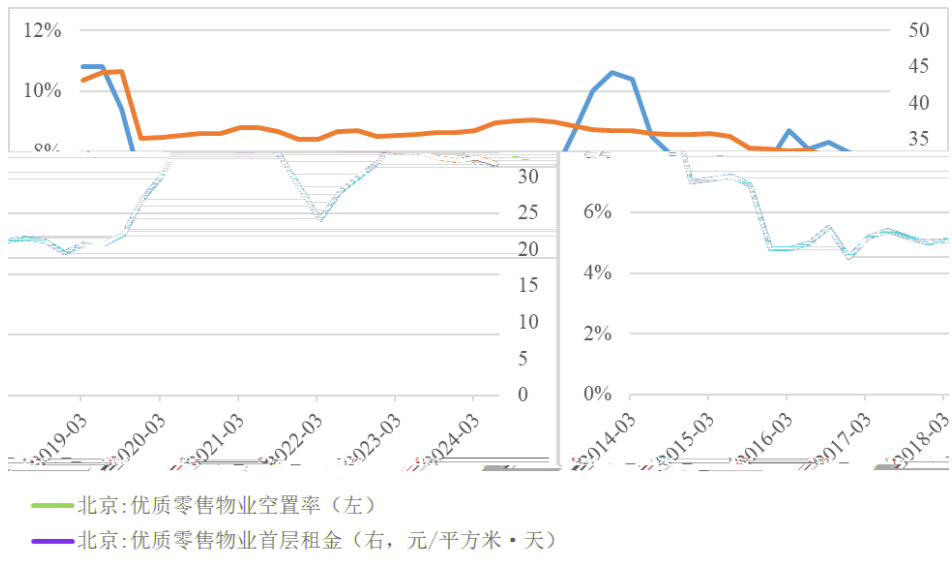
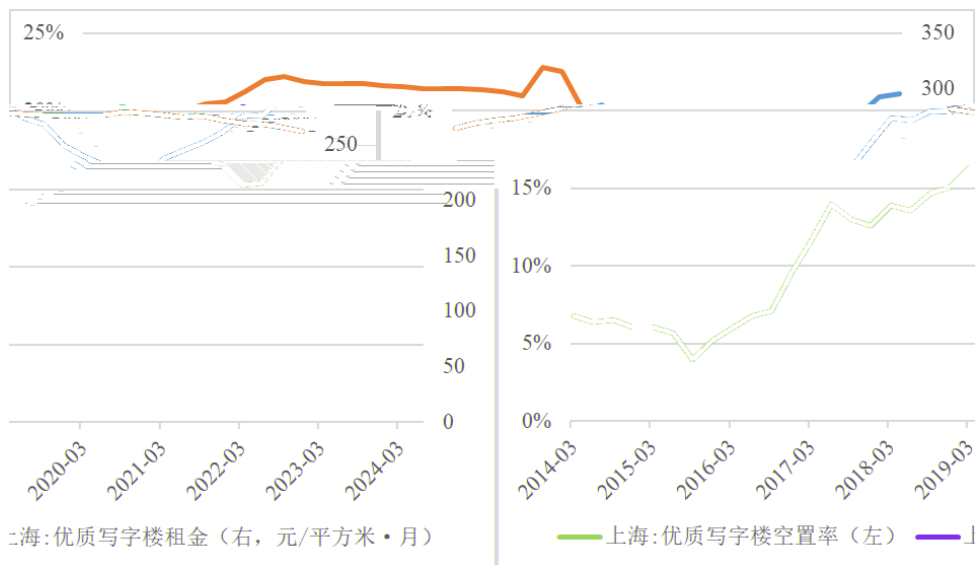
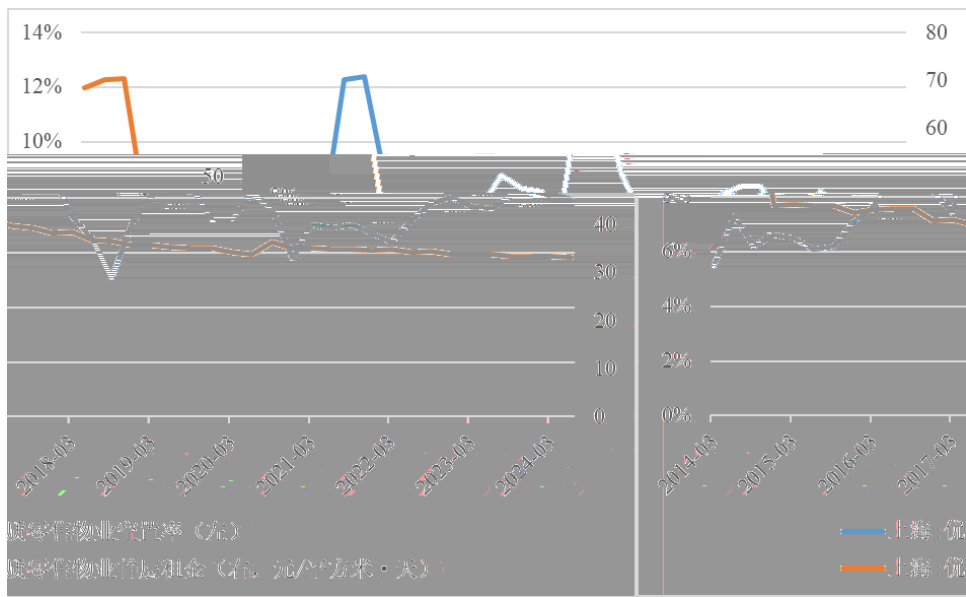
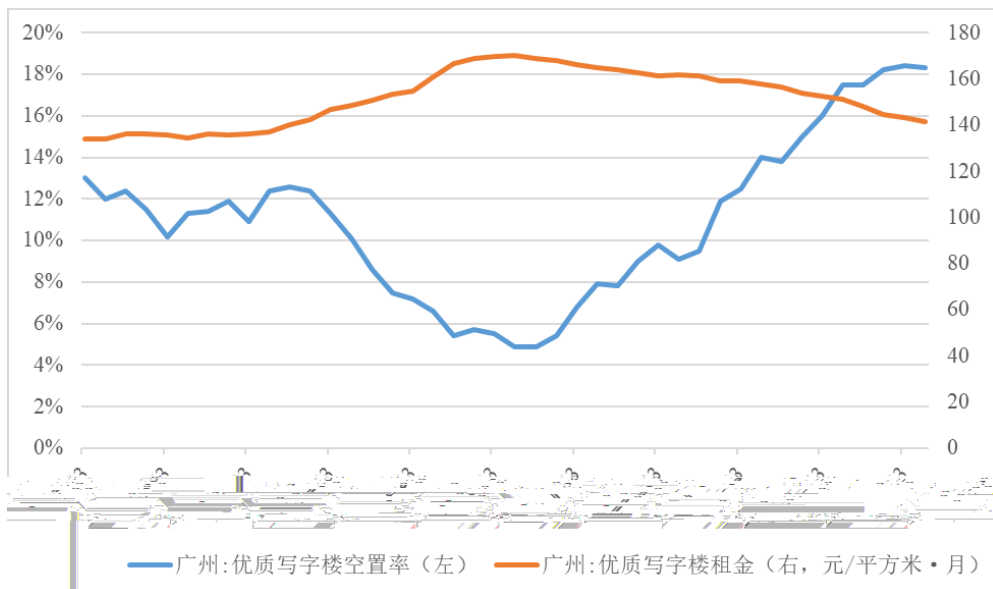
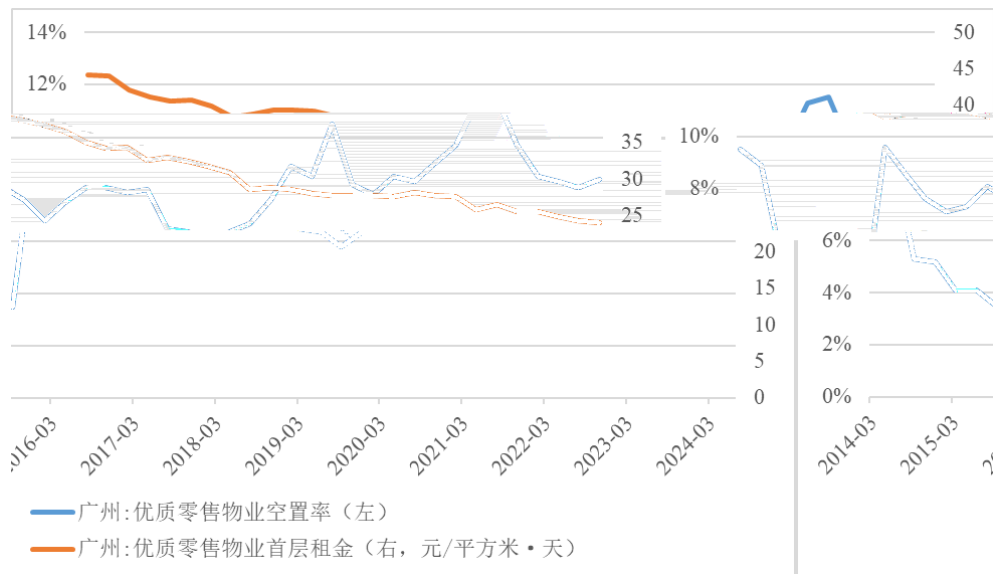


" "

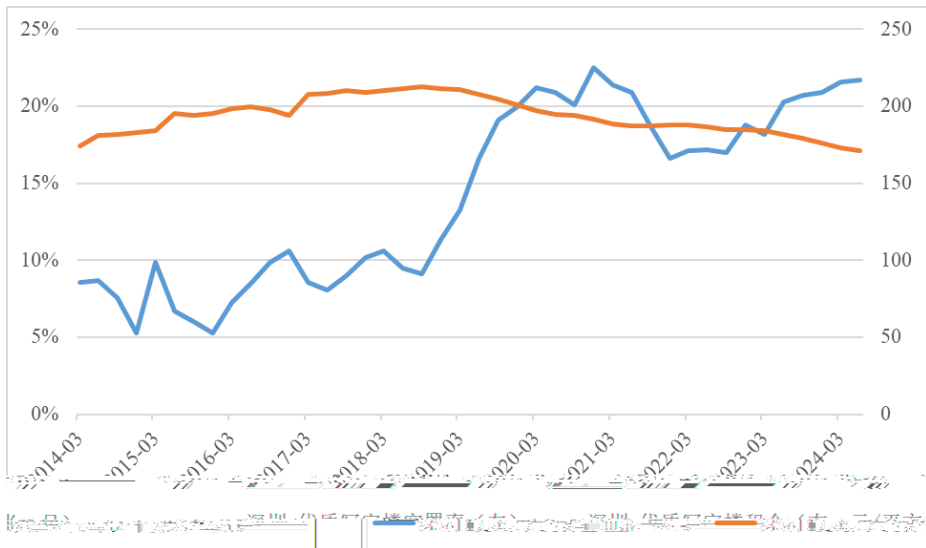
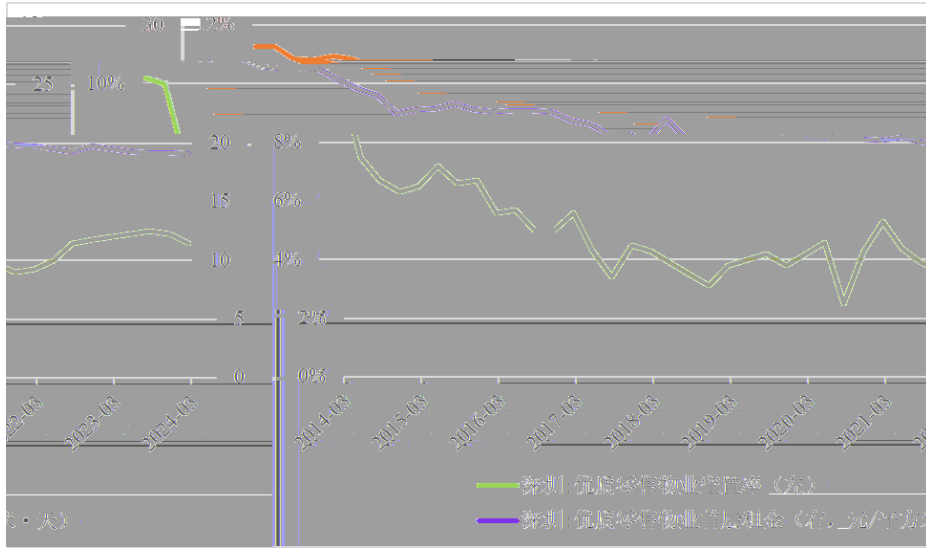
2024	GDP		21791.3	22345.59	14297.66	17302.22	616836.0
2024	GDP	%	5.4	4.8	2.5	5.9	5.0
2024		%	-0.3	-2.3	0.0	1.0	3.7











%	7.6	7.9	8.4	4.6
/	31.8	33.2	24.0	19.1
%	21.7	21.1	18.3	21.7
/	275.8	262.1	141.4	171.1

