




2

2019 11 19 02
 2019-2 2019
 11 20.00%¹


11

1. 11

2019 11 14 13 255.40 ²
 7 9 114.90
 19 24 698.97
 PPN
 5 100

1 2019 11

					%	/		
19	GN003	2019/11/27	30.00	3	3.40	AAA/AAA		
19	GN001	2019/11/27	20.00	5	4.11	AAA/AAA		
19	GN002	2019/11/21	10.00	3	4.30	-		PPN
19	02	2019/11/25	10.00	3+2	3.58	AAA/AAA		
19	NPB	2019/11/28	10.00	7	7.50	AAA/AA		
19	G1	2019/11/21	10.00	2	5.42	AA+/AA+		

G19	1		2019/11/26	32.00	3+2	4.59	AAA/AAA		
G19	1		2019/11/27	5.00	3	7.30	AA/AA		
G19	1		2019/11/12	2.50	3+3+2+2	6.50	AA/-		
G19	1								

2015

COS

2. 11

 2019 11
 55.56%

9

5

3

2 2019 11

				%			%	BP
19	G1	2019/11/26	2	5.42	AA ⁺		7.32	-189.67
G19	1	2019/11/27	3+2	4.59	AAA		5.28	-69.14
19	GN003	2019/11/29	3	3.40	AAA		3.98	-58.18
19	02	2019/11/28	3+2	3.58	AAA		4.10	-52.00
19	GN001	2019/11/29	5	4.11	AAA		4.15	-4.28

G19	1	2019/11/14	3+3+2+2	6.50	AA		6.40	10.00
19	02	2019/11/29	3	4.00	AA+		3.80	20.00
19	NPB	2019/12/2	7	7.50	AAA		6.98	52.33
G19	1	2019/11/29	3	7.30	AA		6.15	115.00

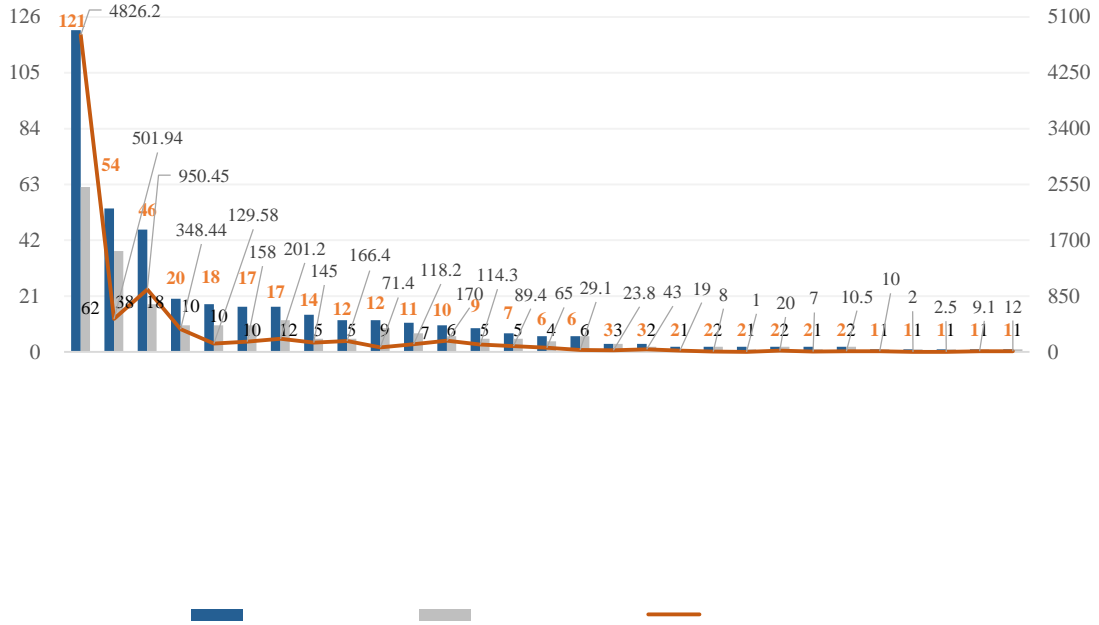
2019 12 5
COS

1.

2019 1 11 106
140 2294.27
76 96 1905.19 74
2019 1 11 23

2. 2016 2019 11

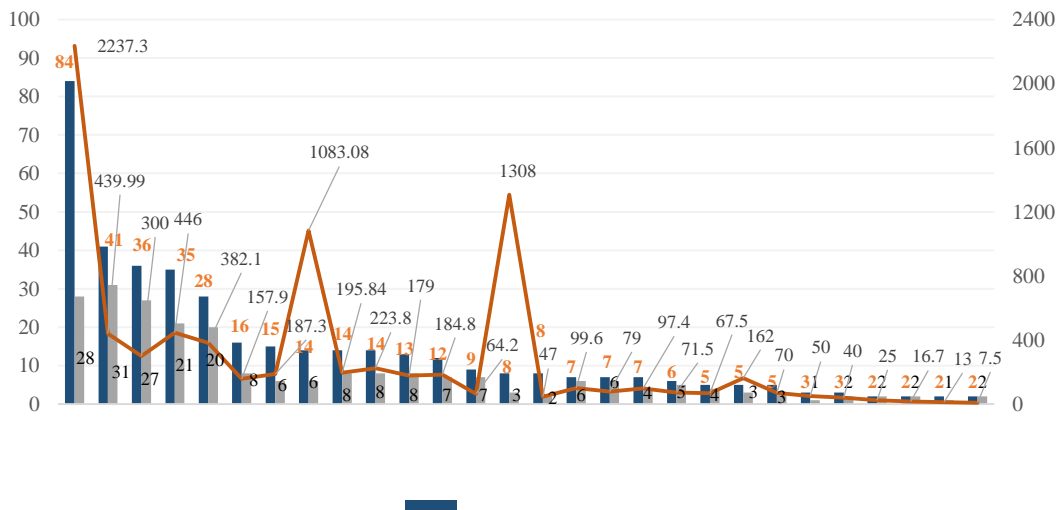
4



Wind

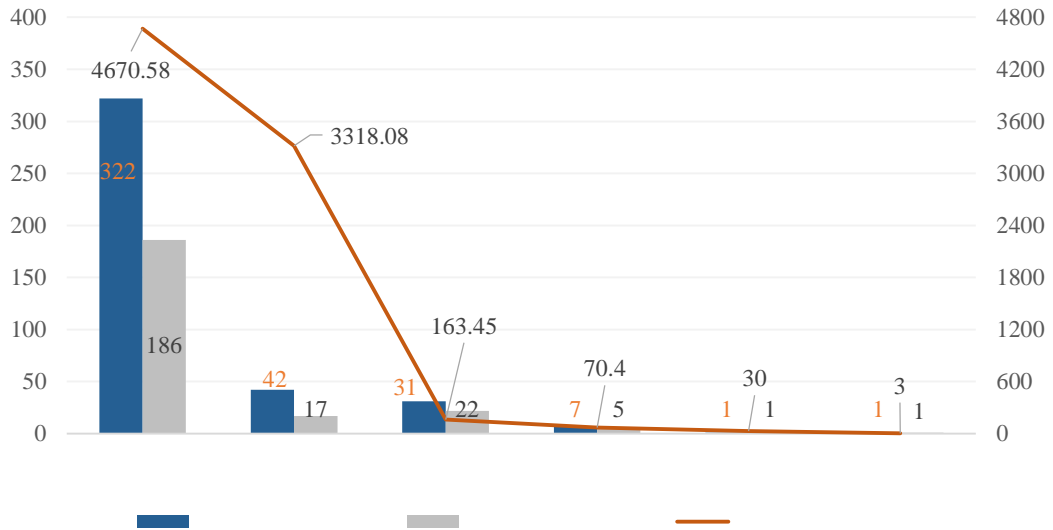
COS

5



COS

6



COS



11 12

2019

100

3

3.1%

2017

250

9

3053

336

4

2019 11 12

2019 11 13

6

6

35%

5

2019 12 4

2018 2800

11 19

2018 2800 6000

2018 2018

16% 2018 8.23

1.13 14.2% 2018

224.2 PPP

2019 11 19

11 20 4.5

8

8 2 4.6% 4.5

3 3.8%

11 30

11 21

5