



联合绿色债券季报

我国绿色金融标准体系不断完善，三季度绿色债券发行量进一步增长

◆					
◇		2		4	
		4		1	2
		1		1	
	1			16	

◆			
◇	2021	86	
		1498.94	
	17	262.84	

◇	2021	34	
		462.29	
	12	215.44	

◇ 2021

◆			
◇	7	1	
◇	7	13	2021
◇	8	31	
◇	9	14	
◇	9	23	
◇	9	24	

 联合资信
Lianhe Ratings





27

2021						" 21		"
" 21			01" " 21			01"		" 21
G1" " GC	01" " GC	03" " GC	02"			" G21		1"
" 21	MTN002		" " 21			GN001		" " 21
MTN005	" " 21		GN001			" " 21		GN001"
" 21	GN002" " 21		MTN001			" "		MTN001
" " 21	GN001		" " 21			GN001" " 21		GN005
"		" 21	SCP009			" " 21		GN004"
" 21	GN005" " 21		GN006"			" 21	CP003	"
" 21	CP002		"	" 21		GN001		"
	"	2021-1"						27
	23		430.57		2021			
					24.32%	28.05%	32.79%	
					" GC	01" " 21		CP003
" " 21	GN001		" " 21			GN001" " 21		GN002"
" 21	GN001	" " 21	MTN005			" " 21		GN001"
" 21		01" " G21	1" " 21			GN004" " GC		02" "
MTN001	" " 21		MTN001			" " 21		GN005
" 21	GN005" 16			1			261.67BP	118.46BP
103.00BP	75.58BP	75.57BP	49.02BP	46.58BP	41.64BP	39.00BP	36.07BP	34.30BP
34.22BP	30.55BP	22.14BP	13.92BP	3.56BP				



	2021		86		117		1498.94	²
				84	103	994.80		49
51	518.67				17		³	262.84
			16		4			271.91
			48.42					
						PPN		
								46
	549.07							
	2021		34		47		462.29	⁴
		46	384.00				43	
				12		215.44		10
198.89								⁵²
		24		26				50%

1 2021

	2016	2017	2018	2019	2020	2021	2021	2021
							%	%
	49	104	111	163	189	117	129.41	13.59
	29	68	88	121	134	86	75.51	2.38
	1985.30	1908.75	2067.19	2439.87	1913.30	1498.94	189.00	50.68
	4.35	4.34	3.87	4.55	5.52	3.30	-32.93	-0.60
	87.76	69.23	74.80	53.99	44.91	78.63	47.26	-6.81
	77.78	63.27	60.81	67.29	59.23	72.34	10.58	-15.02

2021
COS

2020

2021

2021
72.34%

94

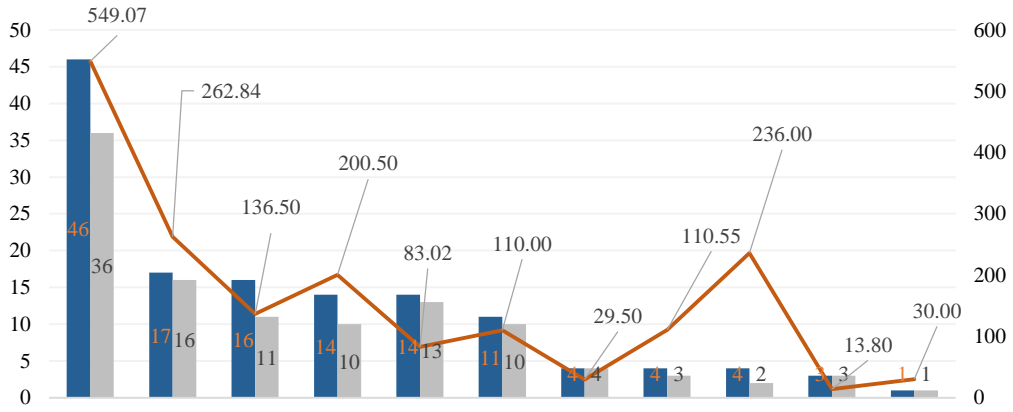
68

2 2021

				%			%	BP
21	MTN001	2021/7/23	2	3.05	AA+		5.78	-273.33
GC	01	2021/8/13	2+1	3.98	AA+		6.60	-261.67
G21	1	2021/8/17	3	4.00	AA		5.88	-187.62
G21	1	2021/9/24	1+1+1	2.90	AAA		4.64	-173.50
21	02	2021/9/23	7	3.90	AAA		5.57	-166.94
21	MTN001	2021/7/26	2	3.50	AA		5.09	-158.75
21	GN001	2021/7/16	3+2	3.58	AAA		4.81	-123.20
21	CP003	2021/8/25	1	2.90	AA+		4.08	-118.46
21	GN001	2021/7/13	2	2.98	AAA		4.01	-103.00
21	GN009	2021/8/13	1	2.50	AAA		3.50	-100.00
21	GN013	2021/9/17	3	2.88	AAA		3.82	-94.31
21	GN012	2021/9/17	3	2.88	AAA		3.82	-94.31
21	GN001	2021/9/26	3	3.00	AAA		3.94	-93.77
21	GN001							

21	MTN001	2021/7/30	3	3.09	AAA		3.67	-58.34
21		2021/8/4	5+2	4.19	AA ⁺		4.76	-57.43
G21	1	2021/8/31	3+2	3.91	AA ⁺		4.46	-55.33
21	GN004	2021/8/31	270	2.43	AAA		2.98	-55.21
21	GN001	2021/8/30	3	3.06	AAA		3.60	-53.66
21	GN001	2021/9/17	3	3.30	AAA		3.82	-52.31
21	GN006	2021/8/12	3	3.10	AAA		3.61	-50.59
21	GN001	2021/8/6	3	3.12	AAA		3.61	-49.02
21	MTN005	2021/7/19	3	3.34	AAA		3.81	-46.58
21	MTN001	2021/7/23	3	3.35	AA ⁺		3.79	-44.33
21	GN001	2021/8/19	3+2	3.10	AAA		3.52	-41.64
21	SCP002	2021/9/27	270	3.19	AA ⁺		3.59	-39.51
21	01	2021/9/27	3	2.80	AAA		3.19	-39.00
21	GN002	2021/7/16	270	2.90	AA ⁺		3.28	-38.45
21	MTN004	2021/8/31	5	3.30	AAA		3.68	-38.22
21	SCP006	2021/9/23	267	2.35	AAA		2.73	-38.00
21	GN004B	2021/9/16	5	3.40	AAA		3.78	-37.89
G21	1	2021/9/29	3+2	5.50	AA		5.86	-36.07
21	GN011	2021/9/3	270	2.55	AAA		2.90	-35.32
21	GN004	2021/8/20	90	2.06	AAA		2.40	-34.30
GC	02	2021/9/28	5	3.36	AAA		3.70	-34.22
21	GN002	2021/9/2	5	3.37	AAA		3.69	-31.83
21	GN005	2021/7/12	3	3.29	AAA		3.61	-31.60
21	GN001	2021/7/23	3	3.43	AAA		3.75	-31.57
GC	01	2021/8/13	3+2	3.10	AAA		3.41	-31.38
	MTN001	2021/7/30	5	3.39	AAA		3.70	-30.55
21	GN003	2021/7/16	270	2.68	AAA		2.96	-28.13
21	G12	2021/9/6	10	3.70	AAA		3.96	-26.00
21	MTN001	2021/7/28	3+2	3.50	AAA		3.72	-22.14
21	GN002	2021/7/13	3	3.33	AAA		3.54	-20.65
21	G1	2021/7/27	3+2+2+3	4.00	AA ⁺		4.20	-20.48
21	G11	2021/9/6	5	3.35	AAA		3.55	-20.19
21	GN002	2021/7/27	3	3.69	AA ⁺		3.87	-18.05
21	GN005	2021/8/20	3	3.41	AAA		3.55	-13.92
GC	01	2021/8/16	3	3.35	AAA		3.43	-7.89

21	02	2021/8/27	5+2	4.41	AA ⁺		4.45	-3.90
21	GN005	2021/9/13	90	2.35	AAA		2.39	-3.56
21	GN005	2021/7/28	5	3.53	AAA		3.56	-2.56



COS

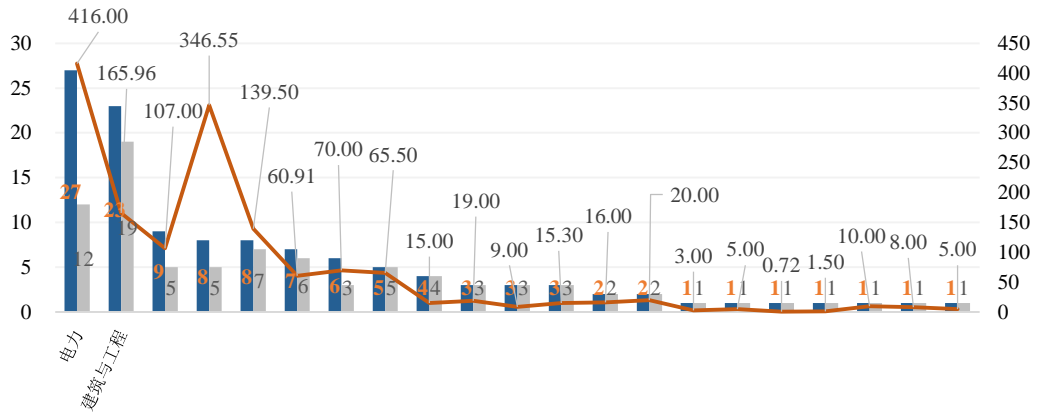


2021
2021

4

COS

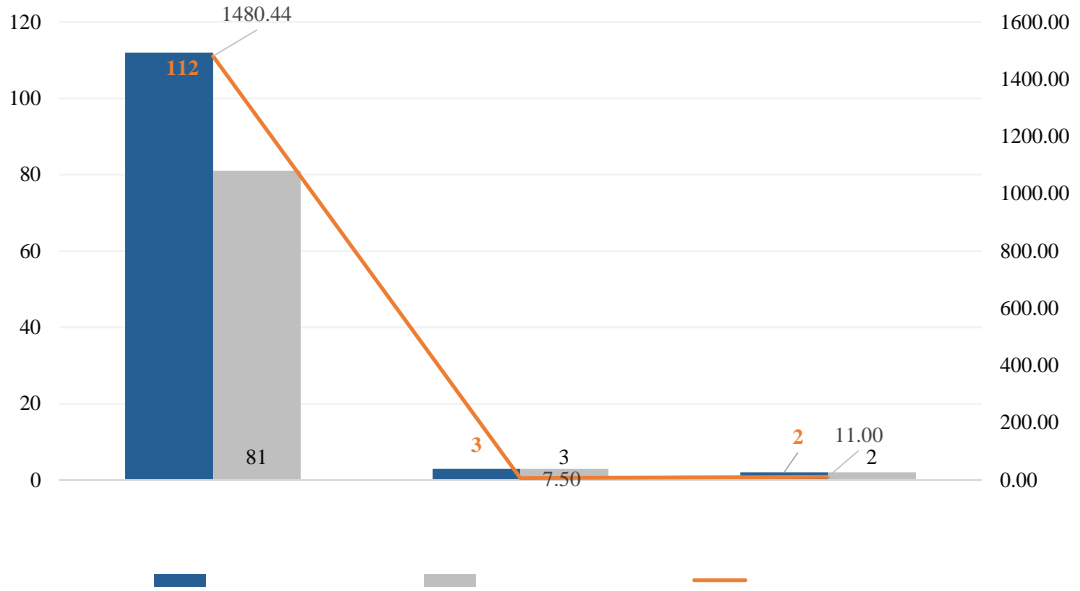
COS



Wind

COS

COS



COS



2021 7 1

2021 7 1

2021

2021 7 13

2 ---

2021

1 ---

2021

"

" "

" "

"

2021

7 15

2021 8 31

"

2021

ABCP "

16

2.58%

120

2021

					%	/		
21	GN009	2021/8/11	20.00	1	2.50	AAA/AAA/		
21	CP003	2021/8/23	1.50	1	2.90	AA+/AA+/		
21	CP002	2021/9/1	5.00	1	50.00	AA+/AA+/		
21	GN001	2021/9/16	3.00	1	5.50	AA/AA/		
21	GN003	2021/7/15	5.00	270	2.68	AAA/AAA/		
21	GN004	2021/8/27	10.00	270	2.43	AAA/AAA/		
21	GN008	2021/7/22	30.00	154	2.26	AAA/AAA/		
21	GN011	2021/9/1	40.00	270	2.55	AAA/AAA/		
21	SCP006	2021/7/23	20.00	180	2.25	AAA/AAA/		
21	SCP009	2021/8/19	6.00	252	2.53	AAA/AAA/		
21	GN004	2021/8/19	20.00	90	2.06	AAA/AAA/		
21	GN005	2021/9/10	20.00	90	2.35	AAA/AAA/		
21	GN006	2021/9/13	20.00	90	2.40	AAA/AAA/		
21	SCP001	2021/8/25	7.50	180	2.40	AAA/AAA/		
21	SCP006	2021/9/22	15.00	267	2.35	AAA/AAA/		
21	SCP002	2021/9/22	2.00	180	2.82	AA+/AA+/		

21	GN002		2021/7/15	2.00	270	2.90	AA+/AA+/		
21	SCP002		2021/9/23	3.00	270	3.19	AA+/AA+/		
21	GN005		2021/7/8	10.00	3	3.29	AAA/AAA/		
21	GN006		2021/8/10	10.00	3	3.10	AAA/AAA/		
21	GN001		2021/7/9	10.00	2	2.98	AAA/AAA/		
21	GN002		2021/7/9	12.00	3	3.33	AAA/AAA/		
21	MTN001		2021/7/14	1.50	3	3.90	AAA/AAA/		
21	MTN005		2021/7/15	1.00	3	3.34	AAA/AAA/		
21	GN001		2021/7/15	5.00	2+N	3.23	AAA/AAA/		
21	GN001		2021/7/15	50.00	3	3.05	AAA/AAA/		
21	GN002		2021/7/21	50.00	3	2.99	AAA/AAA/		
			2021/7/21	10.00	3	3.43	AAA/AAA/		
21	MTN001		2021/7/26	10.00	3+2	3.50	AAA/AAA/		
21	GN005		2021/7/26	15.00	5	3.53	AAA/AAA/		
21	MTN001								

21	GN001		2021/8/3	12.00	3	2.80	AAA/AAA/		
21	GN002		2021/9/7	15.00	3+N	3.20	AAA/AAA/		
21	GN010		2021/8/11	10.00	3	2.85	AAA/AAA/		
21	GN013		2021/9/15	30.00	3	2.88	AAA/AAA/		
21	GN012		2021/9/15	30.00	3	2.88	AAA/AAA/		
21	GN001		2021/8/17	5.00	3+2	3.10	AAA/AAA/		
21	GN005		2021/8/18	10.00	3	3.41	AAA/AAA/		
21	GN003		2021/8/24	8.00	3	2.95	AAA/AAA/		
21	GN004B		2021/9/14	2.00	5	3.40	AAA/AAA/		
21	GN004A		2021/9/14	6.00	3	3.05			
21	GN001		2021/8/26	23.00	3	3.06	AAA/AAA/		
			2021/8/27	15.00	5	3.30			
			2021/8/31	6.00	5	3.37	AAA/AAA/		
			2021/9/1	10.00	3	3.60	AAA/AAA/		
			2021/9/14	1.00	3	3.95	AAA/AAA/		
			2021/9/22	10.00	3+N	3.65	AAA/AAA/		

21	GN001		2021/9/23	8.00	3	30.00	AAA/AAA/		
21	GN002		2021/9/29	10.00	3	3.05	AAA/AAA/		
21	GN001		2021/9/15	10.00	3	3.30	AAA/AA+/		
21	GN001		2021/8/4	5.00	3	3.12	AAA/AA/		
21	MTN002		2021/7/2	0.66	3	4.20	AA+/AA+/		
21	MTN002		2021/9/28	15.00	3	4.89	AA+/AA+/		
21	MTN001		2021/7/21	5.00 3.36	2	3.05	AA+/AA+/		
21	MTN001		2021/7/21	10.00	3	3.35	AA+/AA+/		

21	02		2021/8/25	9.00	5+2	4.41	AA+/AA+/		
21			2021/8/2	8.00	5+2	4.19	AA+/AA+/		
21	01		2021/8/25	15.00	3+3+3+1	60.00	AA+/AA+/		
21	01		2021/8/25	5.00	5+2	4.95	AA+/AA+/		
21	01		2021/8/30	10.00	7	4.93	AA+/AA+/		
21	G1		2021/7/8	8.00	3	3.44	AAA/AAA/		
GC	04		2021/7/22	5.00	3	3.55	AAA/AAA/		
21	V1		2021/7/30	8.00	3+2	3.49	AAA/AAA/		
GC	02		2021/8/11	4.00	5+2	3.50	AAA/AAA/		
GC	01		2021/8/11	1.50	3+2	3.10	AAA/AAA/		
GC	02		2021/8/12	3.00	5	3.75	AAA/AAA/		
GC	01		2021/8/12	12.00	3	3.35	AAA/AAA/		
G21FRY1			2021/8/23	10.00	3+N	3.29	AAA/AAA/		

21	01		2021/9/23	36.00	2	20.00	--		
21			2021/9/24	100.00	3	2.80	AAA/AAA/		
21			2021/7/8	5.00	3	3.80	AA+/AA+/		
21		02	2021/9/15	5.00	3	3.60	AA+/AA+/		
21		01	2021/9/22	0.55	3	4.95	AA-/AA-/		
21			2021/7/6	30.00	3	3.38	AAA/AAA/		
	2021-2	--	2021/9/14	20.00	1.77~3.69	2.60	AAA		ABS
	2021-1	--	2021/9/9	1.32	2.53~4.78	2.95	AAA		ABS
	2021-1	--	2021/7/14	9.84	1.02~3.52	3.20~3.660	AAA		ABS
	2021-2	--	2021/7/27	9.21	2.90~3.60	2.90~3.60	AAA		ABS
	2021-1	--	2021/7/29	2.00	1.00~9.01	4.70~4.90	AAA		ABS
	2021-1	--	2021/9/10	18.95	335	2.840~3.10	AAA		ABS
	2021-1	--	2021/8/11	2.75	1.59~2.93	3.30~4.080	AAA/AA+		ABS
	2021-2	--	2021/8/25	14.12	1.92~2.67	3.20~3.50	--		ABS
	2021-1	--	2021/8/25	50.19	61	2.60	AAA		ABN

2021-3	--	2021/8/24	5.72	90	2.55	--		ABN
2 2021-1	--	2021/8/31	11.88	100	2.55	--		ABN
2021-2	--	2021/9/3	22.55	175	2.60	--		ABN
2021-2	--	2021/9/23	12.50	180	2.90	--		ABN
				2021	4			2021

COS