

Lianhe Monthly Report on Green Bond Market

2019 10

27

19 GN001 19 01

2019 10 7 9

114.90

2019 1 10 97

127 2046.77

319.50

2019 10

10 30

 联合资信评估有限公司
China Lianhe Credit Rating Co.,Ltd.



2 PICC 17
100022
010-85679696
www.lhratings.com
lianhe@lhratings.com

 联合信用评级有限公司
United Credit Ratings Co.,Ltd.



2 PICC 10
100022
010-85172818
www.lianhecreditrating.com.cn
lh@unitedratings.com.cn



2

2019 10 19 01
 19 GN001
 2019 10 28.57% 33.33%
 20.54%¹ 19 GN001 12.17BP ²



10

1. 10

2019 10 7 9 114.90 ³
 17 22 353.39
 7 9 421.28
 4 44.90
 1 2019 10

					%	/		
19	GN001	2019/10/18	2.00	3	3.78	AAA/AA		



G19		2019/10/15	3.00	2+1	7.30	AA+/AA+		
19 G1		2019/10/22	7.00	2+1	7.00	-		
19 01		2019/10/11	20.00	3	4.00	AA+/AA+		

A

AAA

2019-1

2019/10/24

44.12

0.49~1.99

2.98~3.55

B

AA+

1.

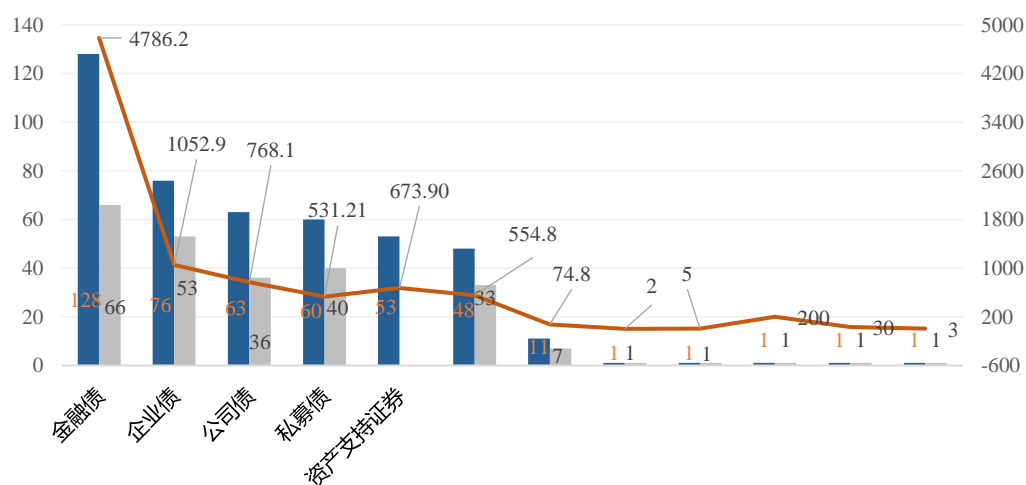
2019	1	10		97			
				127		2046.77	64
75	1252.89				66		
			2019	1	10		21
	319.50			12	76.00		
2016	2019	10	31		224		391
8008.01			53				673.90
3	2016	2019	10				

	2016	2017	2018	2019 1 10	
	49	104	111	127	391
	29	68	88	97	224
	1985.30	1908.75	2067.19	2046.77	8008.01
	4.35	4.34	3.87	4.54	4.28
	87.76	69.23	74.80	53.54	68.03
	77.78	63.27	60.81	65.06	65.38

COS

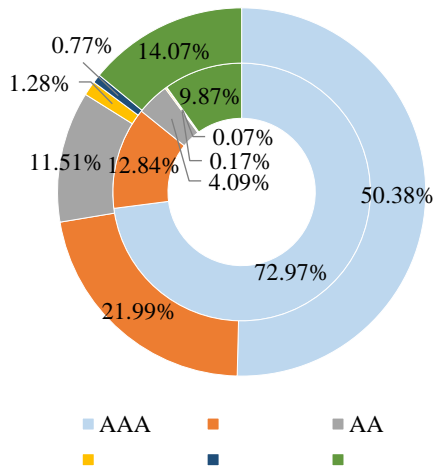
2. 2016 2019 10

1

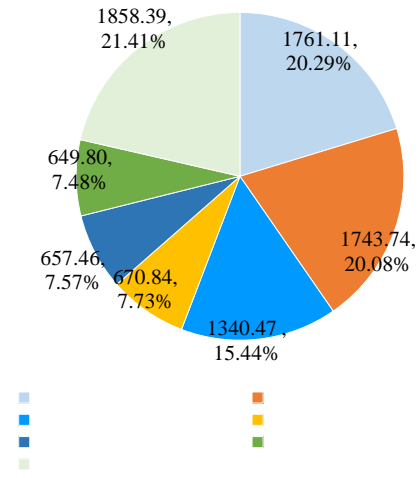


COS

2



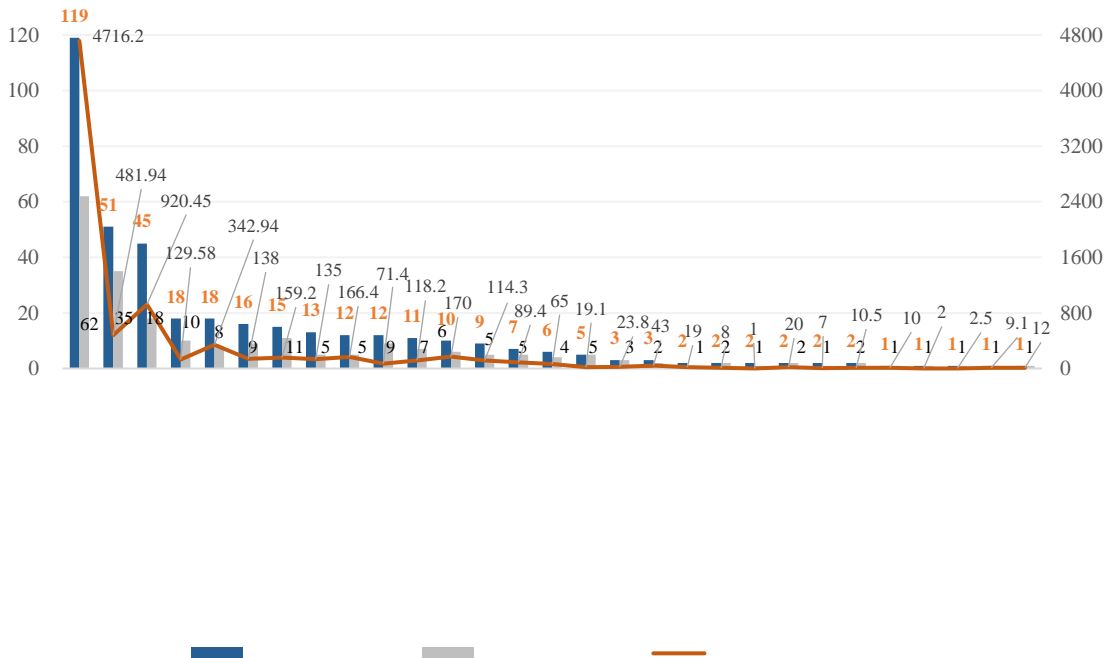
3



COS

COS

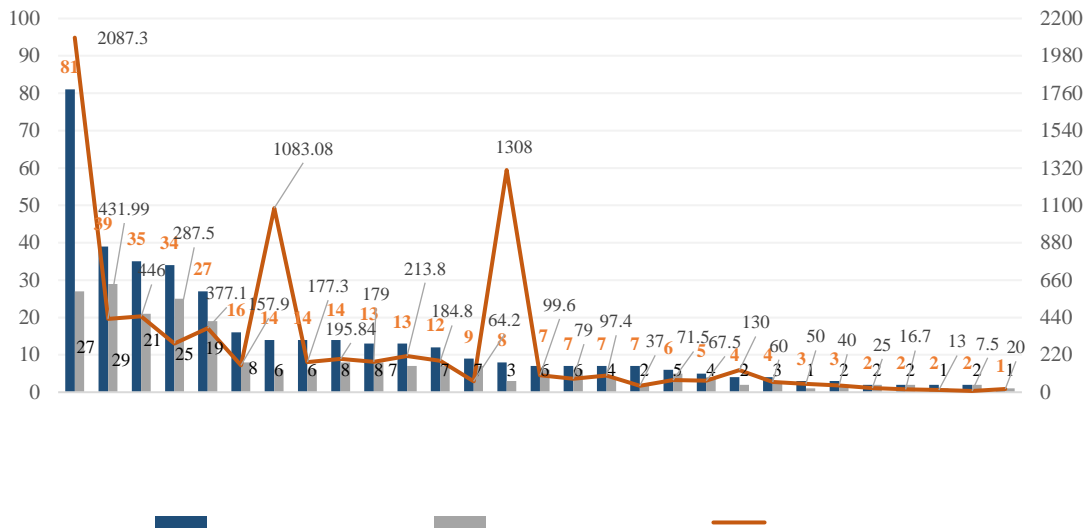
4



Wind

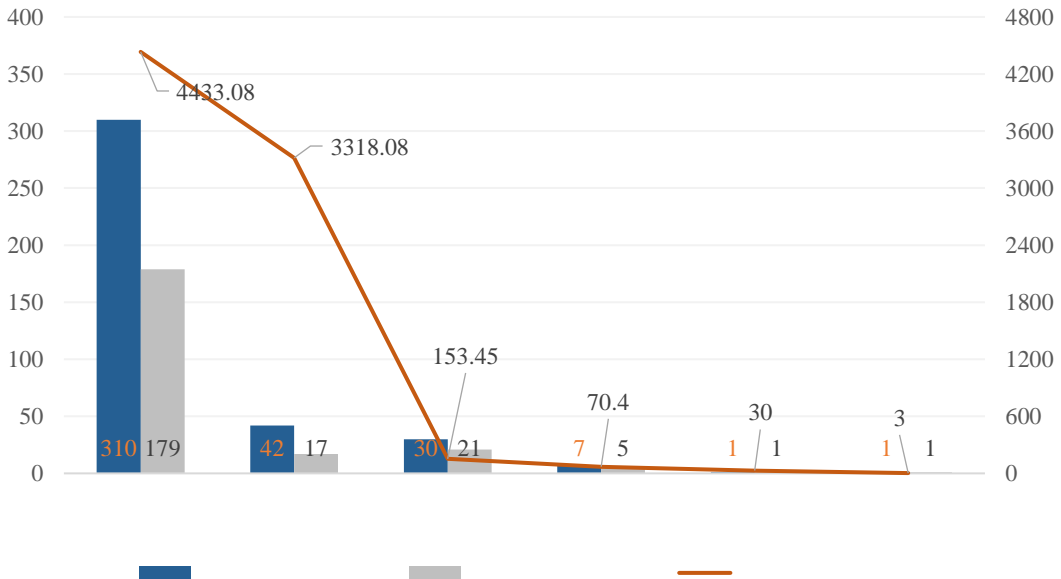
COS

5



COS

6



COS



10 30

55

MOX

3.18%

"

"

3

5

3

25

9 BP

HKQAA

HKQAA

2019 10 30